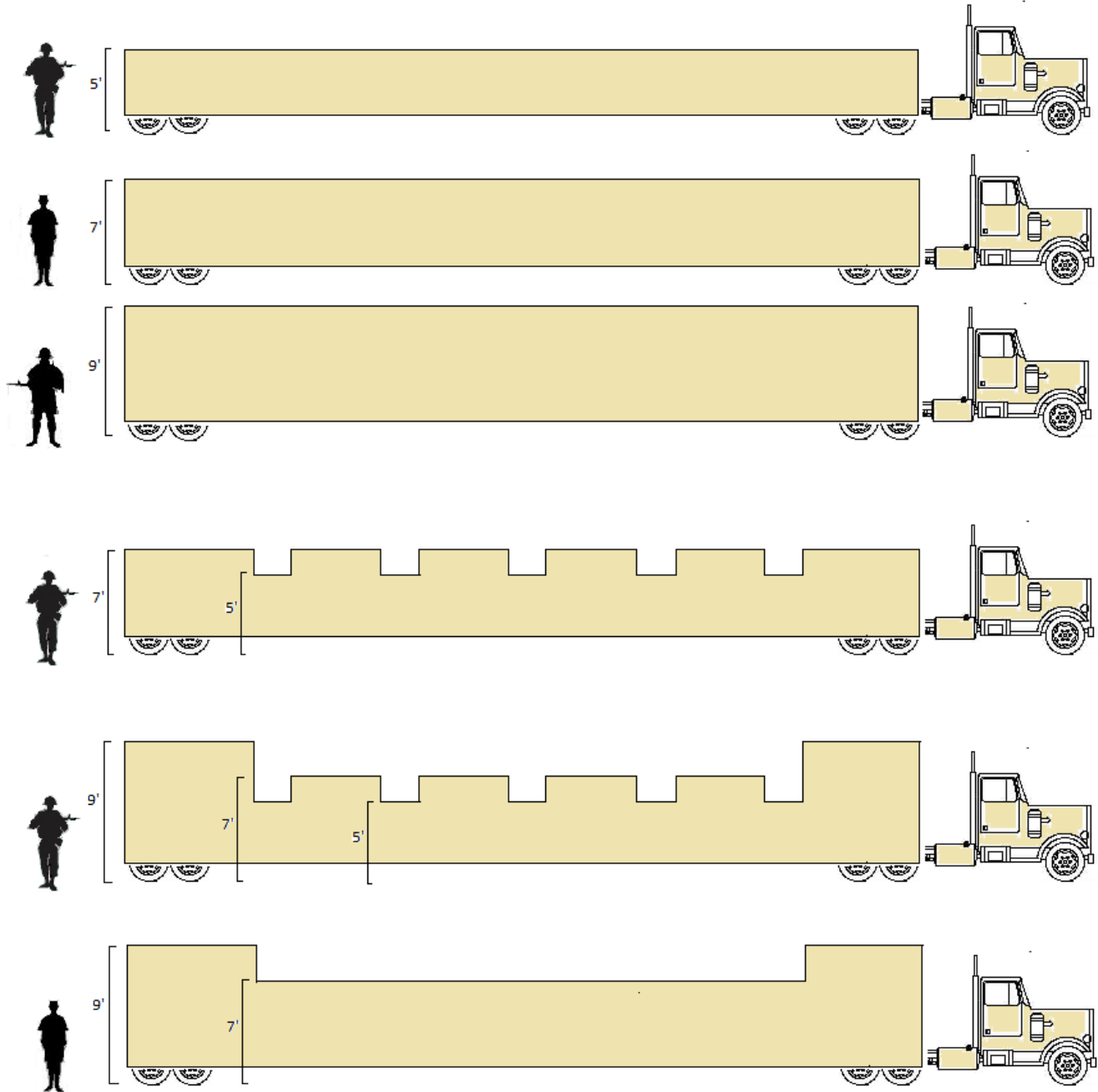


Basic Height Configurations

(Presented on two 21' axle platforms plus one 20' wall section = 62' Protective Length Configuration)



The standard protective wall height on a MBT-1m is 5' with the option of adding up to 4' of additional protective wall height creating between 5' to 9' of protective barrier from the ground up. The wall height can be crenelated (*i.e.* create rectangular gaps or crenellations of 5' and 7' intervals) and/or varied (*e.g.* 9' high walls protecting the axle platforms with 7' or 5' high walls shielding the rest of the barrier). The front and back ends of the MBT-1m can be hardened and enclosed. The standard MBT-1m wall section utilizes a 0.25" thick protective A-36 steel plated skin with a dense network of 0.25" reinforcing steel tubes. Thickness and grade can be increased/decreased to suit the end-user's armor solution requirements (*e.g.* 3/8" AR 400, CoorsTek® ceramic armor systems, Buffalo Armory next generation Star Armor™ steel systems, etc.).

The MBT-1m has been designed to be fully Mil-Spec customizable to suit its end-user's requirements.

The MBT-1m has well over 2,000,000 lbs. (900,000 kg) of sheer strength and can completely stop a car, SUV or pickup in a direct 90° impact of at least 65 mph (105 kph). The MBT-1m is capable of stopping, turning and/or redirecting exponentially more force, especially when angled to the approach.

[Renderings Not to Scale]

Basic Length Configurations

(Overhead View Presented)



Two 21' axle platforms = 42' of protection.



Two 21' Axle Platforms + One 10' Wall Section = 52' of Protective Length.



Two 21' Axle Platforms + One 20' Wall Section = 62' of Protective Length.



Two 21' Axle Platforms + One 20' Wall Section + One 10' Wall Section = 72' of Protective Length.



Two 21' Axle Platforms + Two 20' Wall Sections = 82' of Protective Length.



Two 21' Axle Platforms + Three 20' Wall Section = 102' of Protective Length.

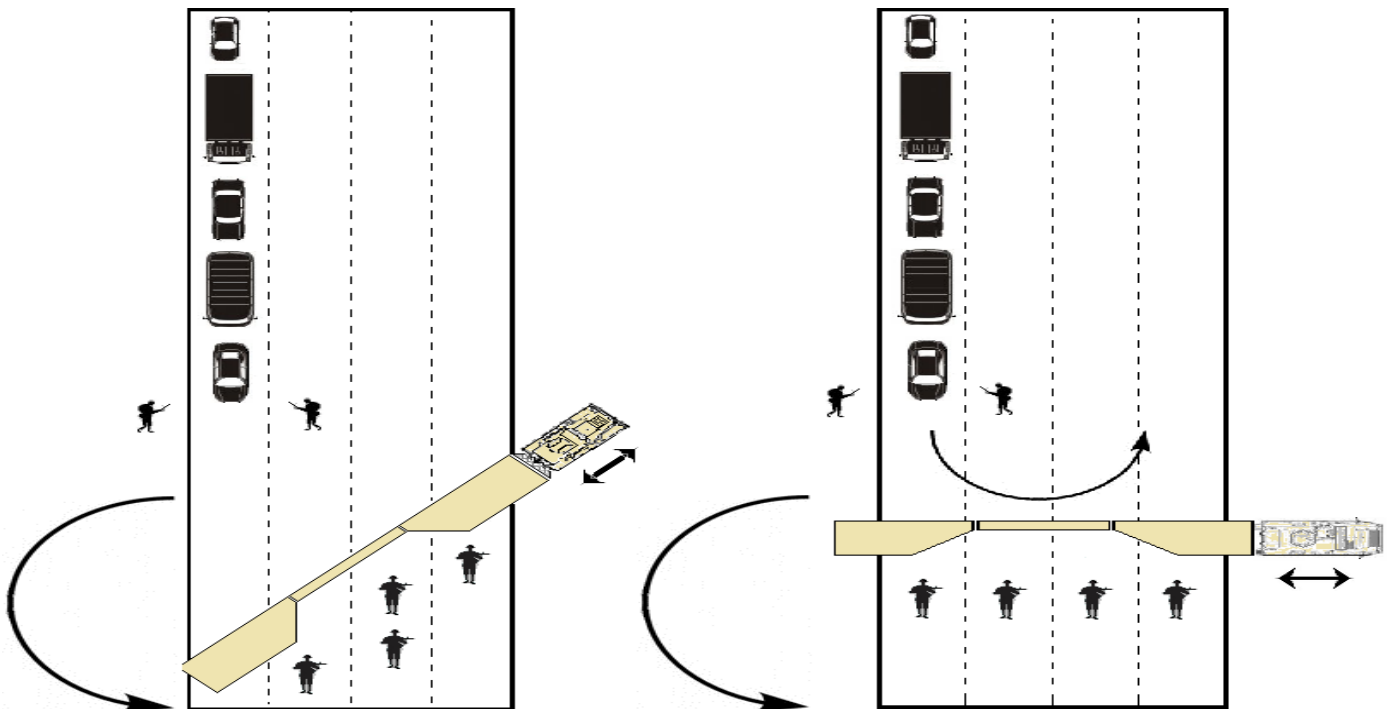
The MBT-1m is modularly expandable providing anywhere from 42' to 102' in length of overall protection (depending upon the situational requirements). Each axle platform is pre-equipped with a 21' protective wall section. A standard MBT-1m protective wall section is 20' but wall sections from 10' to 30' in length can be fabricated. As each of the axle platforms are equipped with 21' of protective wall, adding one modular protective wall section creates a 62' protective zone – a standard configuration.

The MBT-1m is easily reconfigured to provide protection to the right or left.

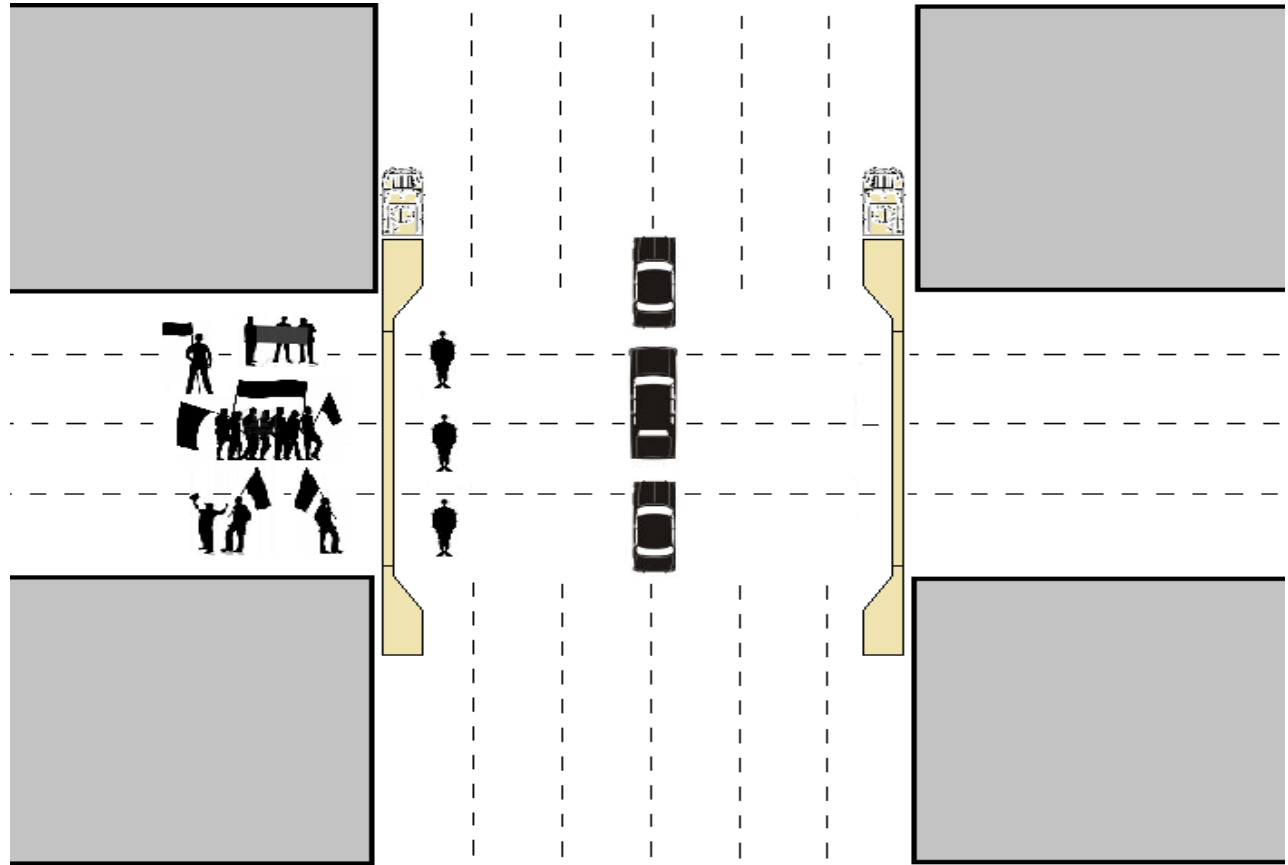
Basic Traffic Control – Mobile Inspection Configuration

Rapid deployment mobility delivers immediate protection at tactical control points (e.g. snap TCPs, road blocks, bridge, tunnel, port and/or city quarantines, confining urban areas, city blocks, etc.). The MBT-1m can be used in conjunction with standard semi-tractors or with vehicles with the capacity to tow at least 20,000 lbs. (e.g. the MRAP family of vehicles - under such circumstances an ordinary tandem/double axel dolly and pintle hitch/receiver is utilized).

Below presents two MBT-1m in 62' protective length configurations as deployed by a MRAP and APC.

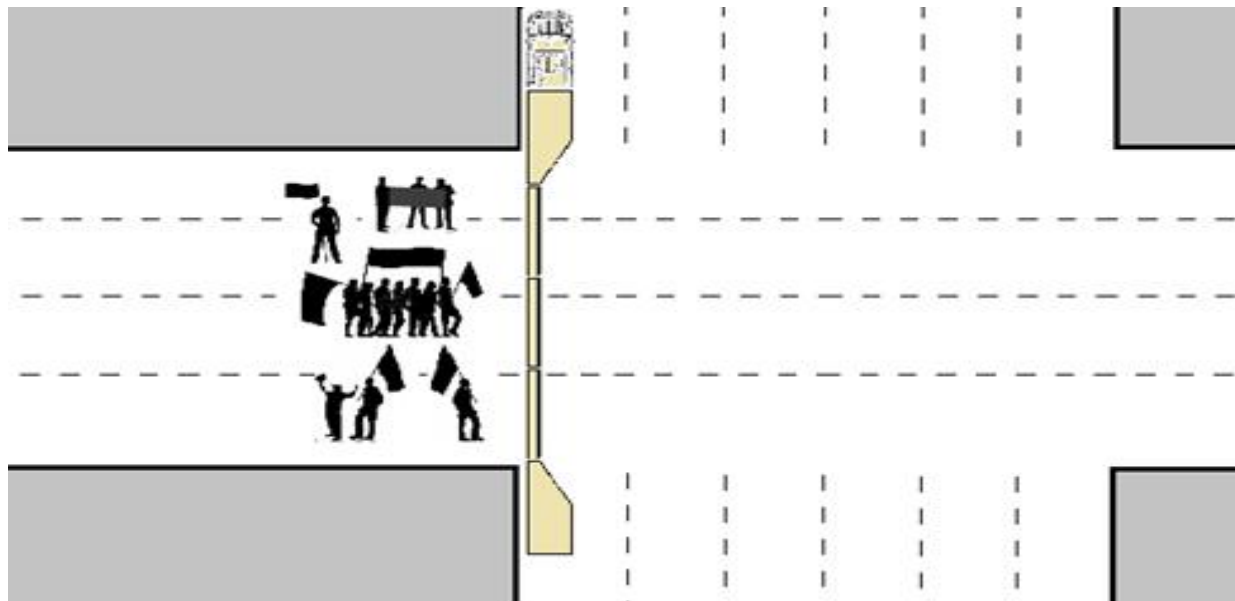


Rapid Crowd Control – Motorcade/Parade Configuration



The MBT-1m travels to destinations at top highway speeds and its modular design allows for shipping via container, rail, aircraft, etc.

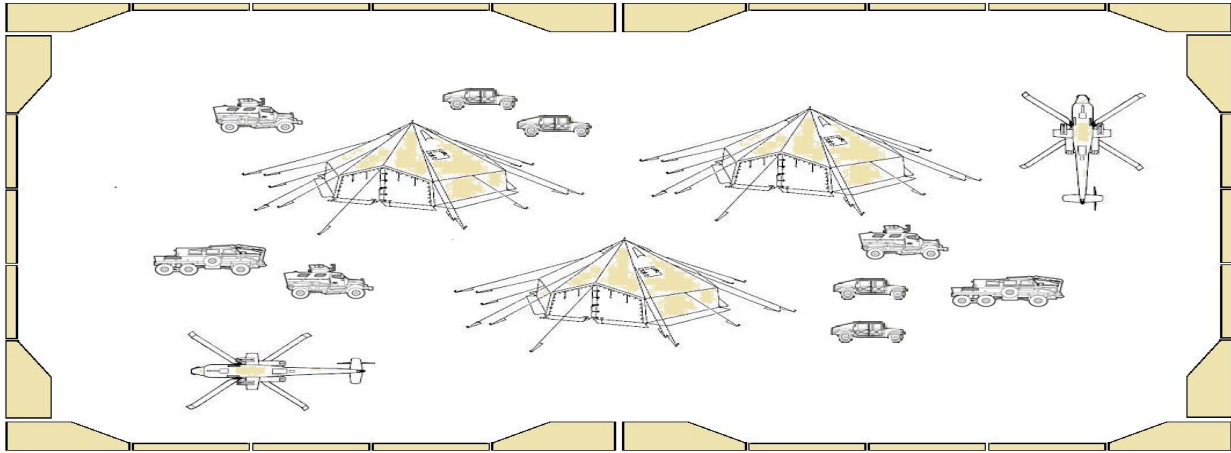
Basic Rapid Crowd Control - Barricade Configuration



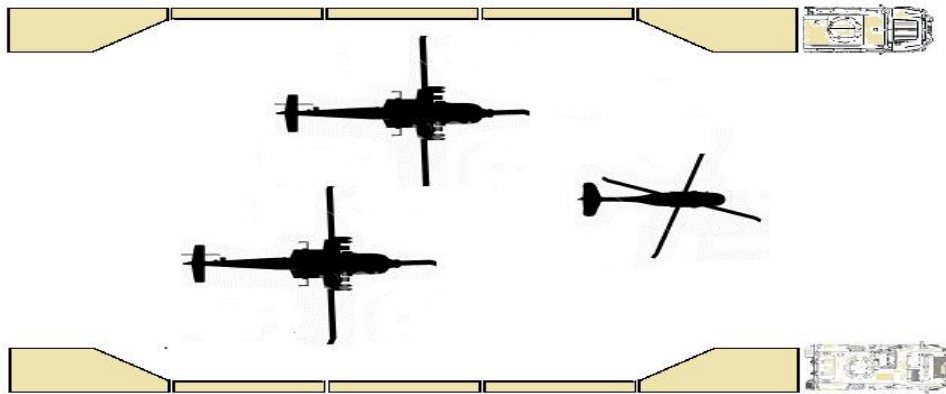
Multiple MBT-1ms can be configured in a variety of positions and utilized together (*e.g.* to envelop a structure, to envelop a field position, to create multiple layers of protection, to secure a facility or structure, to secure a crash or construction site, to secure a well/mine, to barricade a roadway, port or bridge, to quarantine a city block, to contain or repel a crowd, etc.).

[Renderings Not to Scale]

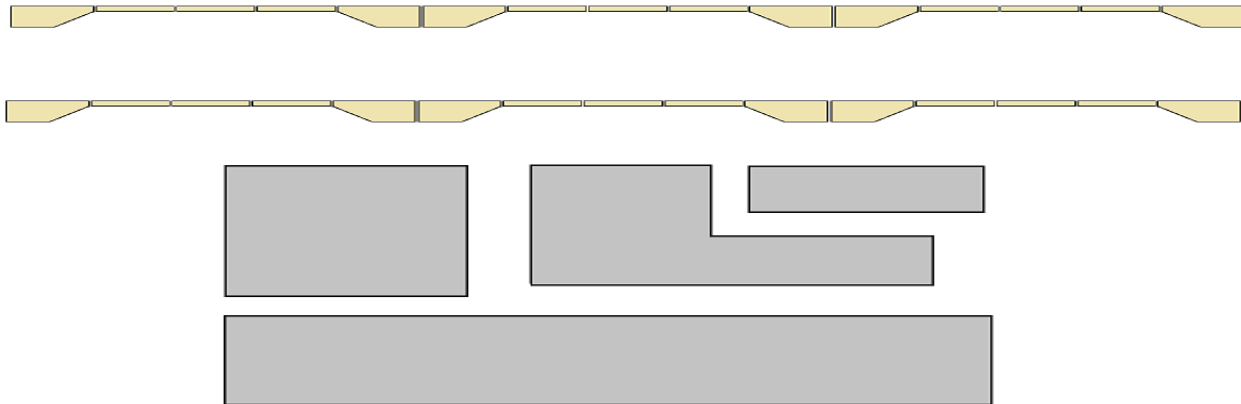
Basic Camp Envelopment – Six MBT-1m Configuration



Basic Rapid Position Envelopment – Two Sided Configuration



Basic Two-Tier Structure Defense Configuration



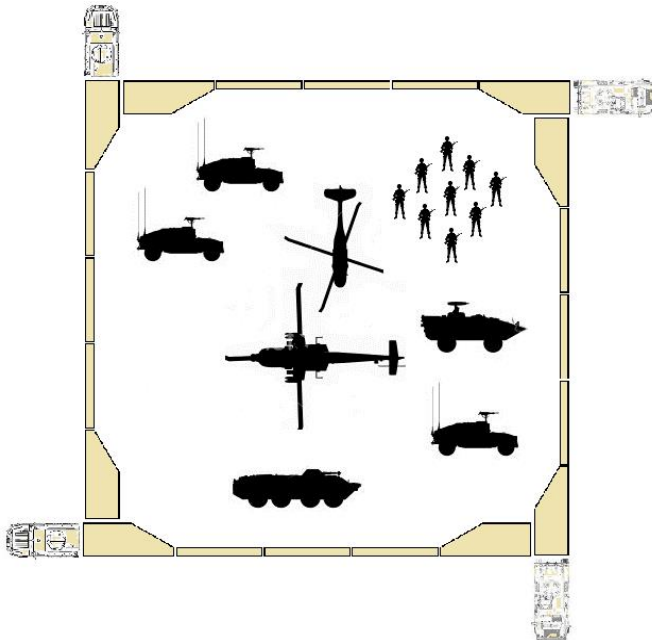
The standard MBT-1m has over 65 sq. ft. of enclosed power and equipment storage space located below the front and rear platform decks with the capacity to store oversized and additional equipment and/or small vehicles (e.g. DPV, FAV, etc.) upon the 128 sq. ft. platform decks themselves. Each platform deck can be easily configured as a weapons/systems/equipment platform (e.g. .50 Cal., MK-19 Automatic Grenade Launcher, 20 mm Cannon, TOW, Stinger, Laser, Crane, Scissor Lift, Boom Lift, Audio/Visual Tower, etc.).

The MBT-1m is fully Mil-Spec customizable and can be factory equipped as required including, without limitation, electronic signage, exterior lighting, onboard power (120/240 diesel generator, 12/24v battery packs and solar), air compressor, rear steering, hydraulic wall sections, tire and wheel skirts/armor, base plates, etc. Conversely, the MBT-1m can be ordered in its most basic configuration.

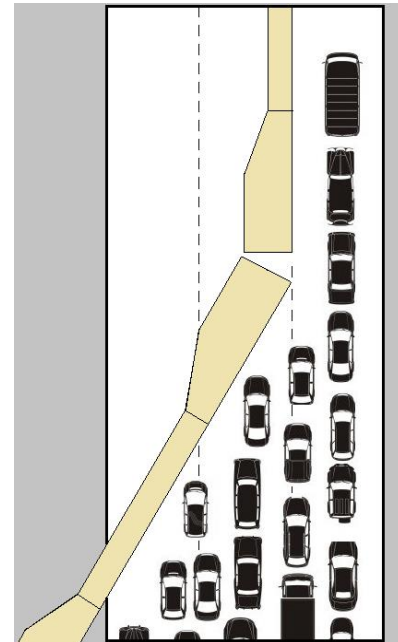
[Renderings Not to Scale]

The MBT-1m's rapid deployment mobility and modular design provides infinite applications.

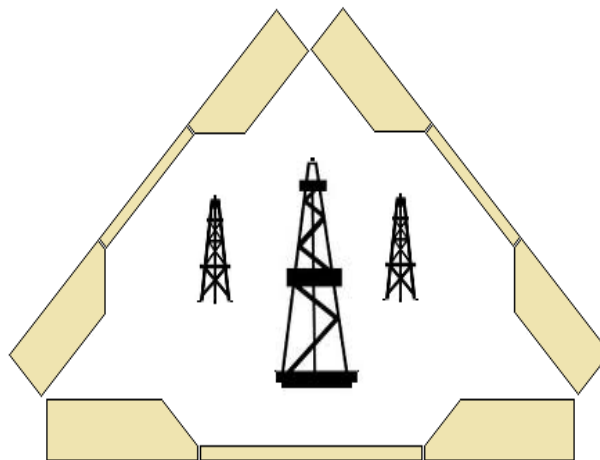
Rapid Scene Envelopment Four Sided Configuration



Absolute Traffic Control



Basic Structure Envelopment – Three Sided Configuration



[Renderings Not to Scale]

For more information, pictures, models and videos visit: <http://www.mobilebarriers.com/security-defense-photos.html>

Point of Contact:

David A. Palladino

Executive Vice President, Security & Defense / General Counsel



Mobile Barriers LLC • CAGE Code: 70N96

24918 Genesee Trail Road

Golden, Colorado 80401

ph. 303.946.0957 • e-mail: david@mobilebarriers.com • website: <http://www.mobilebarriers.com/index.htm>