

## MBT-1 Basic Configuration

(62' w/ 1 Wall Section)

- Modular platforms, caboose (movable rear axle assembly) & wall sections
- Configurable from 42-102' w/ 0-3 wall sections
  - Use one or more individually or together
    - Reconfigurable to the right or the left (tractor & caboose attach at either end)
- Tested/FHWA Accepted under NCHRP 350 & MASH for TL-2 and TL-3 use on the National Highway System

## Common Options

- Additional wall sections (10' or 20')
- Onboard power (120/240 generator, 12/24V battery packs & solar)
  - Work lighting
  - Signage
- TMA (TL-2 or TL-3)
- Rear steer (w/ adjustable clearance)
- Other (made to order)

## Fire & Security/Defense Options Available

For additional pictures, video and other information, including crash test video and NCHRP 350/MASH Acceptance, see [mobilebarriers.com](http://mobilebarriers.com)

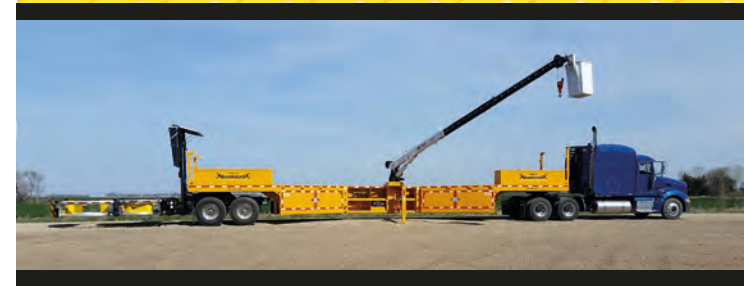
### Mobile Barriers LLC

24918 Genesee Trail Road • Golden, Colorado 80401  
phone 303-526-5995  
email [sales@mobilebarriers.com](mailto:sales@mobilebarriers.com)

[mobilebarriers.com](http://mobilebarriers.com)



Mobile Barriers, LLC.  
24918 Genesee Trail Road  
Golden, Colorado 80401



**Mobile Barriers MBT-1®**  
Improving Safety, Efficiency & Traffic Flows  
In & Around Work Zones



[mobilebarriers.com](http://mobilebarriers.com)

# MOBILE BARRIERS

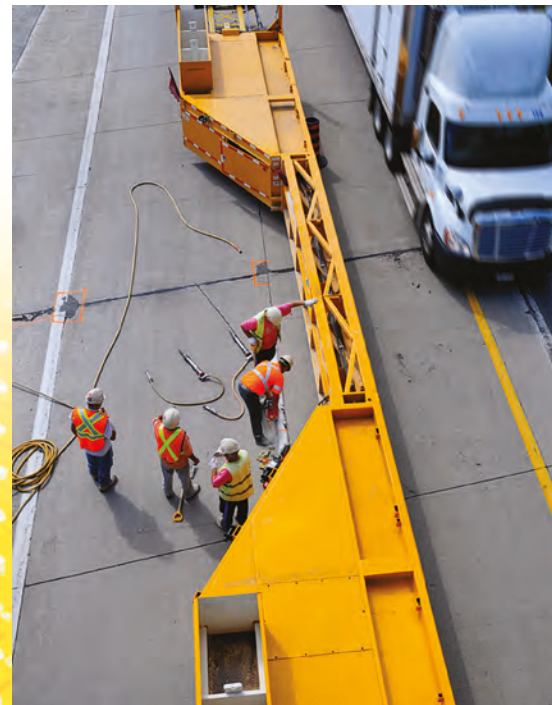
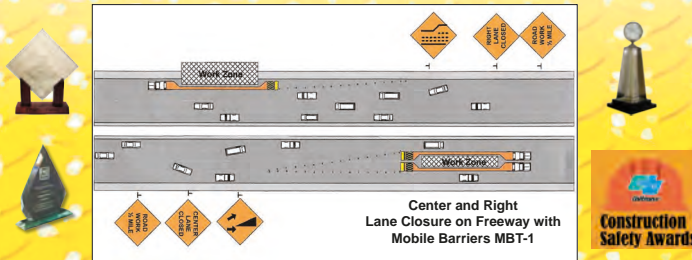


## Mobile Barriers MBT-1®

Improving Safety, Efficiency & Traffic Flows  
In & Around Work Zones

42'-102' of highly mobile protection.  
Interchangeable right/left configurations.  
Modular, efficient and self-contained.  
Onboard power, lighting, storage & other features.  
NCHRP 350 & MASH TL-3.

Fire & Security/Defense Options Available



mobilebarriers.com

mobilebarriers.com